

Test Report

No.: NGBEC25002441809

Date: Apr 25, 2025

Page 1 of 8

Client Name: NINGBO KLS ELECTRONIC CO.,LTD

Client Address: NO. 8-1, RONGXIA RD. XIAPU SHANQIAN INDUSTRIAL ZONE BEILUN NINGBO
ZHEJIANG CHINA

Sample Name: Tactile switches

Model No.: L-KLS7-TS

Client Ref. Information: See attachment

Main Substance: PPA Black

The above sample(s) and information were provided by the client.

SGS Job No.: NBP25-002944

Sample Receiving Date: Apr 21, 2025

Testing Period: Apr 21, 2025 ~ Apr 25, 2025

Test Requested: Select test(s) as requested by the client.

Test Method(s): Please refer to next page(s).

Test Result(s): Please refer to next page(s).

Test Requirement	Conclusion
EU RoHS Directive (EU) 2015/863 amending Annex II to Directive 2011/65/EU - Lead, Mercury, Cadmium, Hexavalent chromium, Polybrominated biphenyls (PBB), Polybrominated diphenyl ethers (PBDE), Bis(2-ethylhexyl) phthalate (DEHP), Butyl benzyl phthalate (BBP), Dibutyl phthalate (DBP) and Diisobutyl phthalate (DIBP)	Pass

Signed for and on behalf of

SGS-CSTC Standards Technical Services Co., Ltd. Ningbo Branch

May Zhang

May Zhang

Approved Signatory

Scan to see the report



280D6B2A



Unless otherwise agreed in writing, this document is issued by the Company subject to its General Conditions of Service printed overleaf, available on request or accessible at <https://www.sgs.com/en/Terms-and-Conditions>. Attention is drawn to the limitation of liability, indemnification and jurisdiction issues defined therein. Any holder of this document is advised that information contained hereon reflects the Company's findings at the time of its intervention only and within the limits of Client's instructions, if any. The Company's sole responsibility is to its Client and this document does not exonerate parties to a transaction from exercising all their rights and obligations under the transaction documents. This document cannot be reproduced except in full, without prior written approval of the Company. Any unauthorized alteration, forgery or falsification of the content or appearance of this document is unlawful and offenders may be prosecuted to the fullest extent of the law. Unless otherwise stated the results shown in this test report refer only to the sample(s) tested.

Attention: To check the authenticity of testing / inspection report & certificate, please contact us at telephone: (86-755) 8307 1443, or email: CN.Doccheck@sgs.com

SGS-CSTC Standards Technical Services Co., Ltd.
Ningbo Branch

No.1177, Lingyun Road, Hi-Tech Zone, Ningbo, Zhejiang, China 315040 t E&E (86-574)89070249

www.sgsgroup.com.cn

中国·浙江·宁波高新区凌云路1177号 邮编: 315040 t HL (86-574)89070271 t ML (86-574)89070242 sgs.china@sgs.com

Test Report

No.: NGBEC25002441809

Date: Apr 25, 2025

Page 2 of 8

Test Result(s):

Test Part Description:

SN ID	Sample No.	SGS Sample ID	Description
SN1	A5	NGB25-0024418-0001.C005	Black solid

Remarks:

- (1) 1 mg/kg = 1 ppm = 0.0001%
- (2) MDL = Method Detection Limit
- (3) ND = Not Detected (< MDL)
- (4) "-" = Not Regulated

EU RoHS Directive (EU) 2015/863 amending Annex II to Directive 2011/65/EU - Lead, Mercury, Cadmium, Hexavalent chromium, Polybrominated biphenyls (PBB), Polybrominated diphenyl ethers (PBDE), Bis(2-ethylhexyl) phthalate (DEHP), Butyl benzyl phthalate (BBP), Dibutyl phthalate (DBP) and Diisobutyl phthalate (DIBP)

Test Method: With reference to IEC 62321-4:2013+AMD1:2017, IEC 62321-5:2013, IEC 62321-7-2:2017 and IEC 62321-12:2023, analysis was performed by ICP-OES/AAS, UV-Vis and GC-MS.

Test Item(s)	Limit	Unit(s)	MDL	A5
Lead (Pb)	1000	mg/kg	2	ND
Mercury (Hg)	1000	mg/kg	2	ND
Cadmium (Cd)	100	mg/kg	2	ND
Hexavalent Chromium (Cr(VI))	1000	mg/kg	8	ND
Polybrominated biphenyls (PBB)	1000	mg/kg	-	ND
Monobrominated biphenyl (MonoBB)	-	mg/kg	25	ND
Dibrominated biphenyl (DiBB)	-	mg/kg	25	ND
Tribrominated biphenyl (TriBB)	-	mg/kg	25	ND
Tetrabrominated biphenyl (TetraBB)	-	mg/kg	25	ND
Pentabrominated biphenyl (PentaBB)	-	mg/kg	25	ND
Hexabrominated biphenyl (HexaBB)	-	mg/kg	25	ND
Heptabrominated biphenyl (HeptaBB)	-	mg/kg	25	ND
Octabrominated biphenyl (OctaBB)	-	mg/kg	25	ND
Nonabrominated biphenyl (NonaBB)	-	mg/kg	25	ND
Decabrominated biphenyl (DecaBB)	-	mg/kg	25	ND
Polybrominated diphenyl ethers (PBDE)	1000	mg/kg	-	ND
Monobrominated diphenyl ether (MonoBDE)	-	mg/kg	25	ND
Dibrominated diphenyl ether (DiBDE)	-	mg/kg	25	ND
Tribrominated diphenyl ether (TriBDE)	-	mg/kg	25	ND
Tetrabrominated diphenyl ether (TetraBDE)	-	mg/kg	25	ND
Pentabrominated diphenyl ether (PentaBDE)	-	mg/kg	25	ND
Hexabrominated diphenyl ether (HexaBDE)	-	mg/kg	25	ND
Heptabrominated diphenyl ether (HeptaBDE)	-	mg/kg	25	ND



Unless otherwise agreed in writing, this document is issued by the Company subject to its General Conditions of Service printed overleaf, available on request or accessible at <https://www.sgs.com/en/Terms-and-Conditions>. Attention is drawn to the limitation of liability, indemnification and jurisdiction issues defined therein. Any holder of this document is advised that information contained hereon reflects the Company's findings at the time of its intervention only and within the limits of Client's instructions, if any. The Company's sole responsibility is to its Client and this document does not exonerate parties to a transaction from exercising all their rights and obligations under the transaction documents. This document cannot be reproduced except in full, without prior written approval of the Company. Any unauthorized alteration, forgery or falsification of the content or appearance of this document is unlawful and offenders may be prosecuted to the fullest extent of the law. Unless otherwise stated the results shown in this test report refer only to the sample(s) tested.

Attention: To check the authenticity of testing /inspection report & certificate, please contact us at telephone: (86-755) 8307 1443, or email: CN.Doccheck@sgs.com

SGS-CTI Standards Technical Services Co., Ltd.
Ningbo Branch

No.1177, Lingyun Road, Hi-Tech Zone, Ningbo, Zhejiang, China 315040 tE&E (86-574)89070249
中国·浙江·宁波高新区凌云路1177号 邮编: 315040 tHL (86-574)89070271 tML (86-574)89070242 sgs.china@sgs.com

www.sgs.com
sgs.china@sgs.com

Test Report

No.: NGBEC25002441809

Date: Apr 25, 2025

Page 3 of 8

Test Item(s)	Limit	Unit(s)	MDL	A5
Octabrominated diphenyl ether (OctaBDE)	-	mg/kg	25	ND
Nonabrominated diphenyl ether (NonaBDE)	-	mg/kg	25	ND
Decabrominated diphenyl ether (DecaBDE)	-	mg/kg	25	ND
Bis(2-ethylhexyl) phthalate (DEHP)	1000	mg/kg	50	ND
Butyl benzyl phthalate (BBP)	1000	mg/kg	50	ND
Dibutyl Phthalate (DBP)	1000	mg/kg	50	ND
Diisobutyl Phthalate (DIBP)	1000	mg/kg	50	ND

Notes:

- (1) The maximum permissible limit is quoted from RoHS Directive (EU) 2015/863.
- (2) IEC 62321 series is equivalent to EN 62321 series.
- (3) The restriction of DEHP, BBP, DBP and DIBP shall apply to medical devices, including in vitro medical devices, and monitoring and control instruments, including industrial monitoring and control instruments, from 22 July 2021.

Unless otherwise stated, the decision rule for conformity reporting is based on Binary Statement for Simple Acceptance Rule ($w=0$) stated in ILAC-G8:09/2019.



SGS-CTC Standards Technical Services Co., Ltd.
Ningbo Branch

Unless otherwise agreed in writing, this document is issued by the Company subject to its General Conditions of Service printed overleaf, available on request or accessible at <https://www.sgs.com/en/Terms-and-Conditions>. Attention is drawn to the limitation of liability, indemnification and jurisdiction issues defined therein. Any holder of this document is advised that information contained hereon reflects the Company's findings at the time of its intervention only and within the limits of Client's instructions, if any. The Company's sole responsibility is to its Client and this document does not exonerate parties to a transaction from exercising all their rights and obligations under the transaction documents. This document cannot be reproduced except in full, without prior written approval of the Company. Any unauthorized alteration, forgery or falsification of the content or appearance of this document is unlawful and offenders may be prosecuted to the fullest extent of the law. Unless otherwise stated the results shown in this test report refer only to the sample(s) tested.

Attention: To check the authenticity of testing /inspection report & certificate, please contact us at telephone: (86-755) 8307 1443, or email: CN.Doccheck@sgs.com

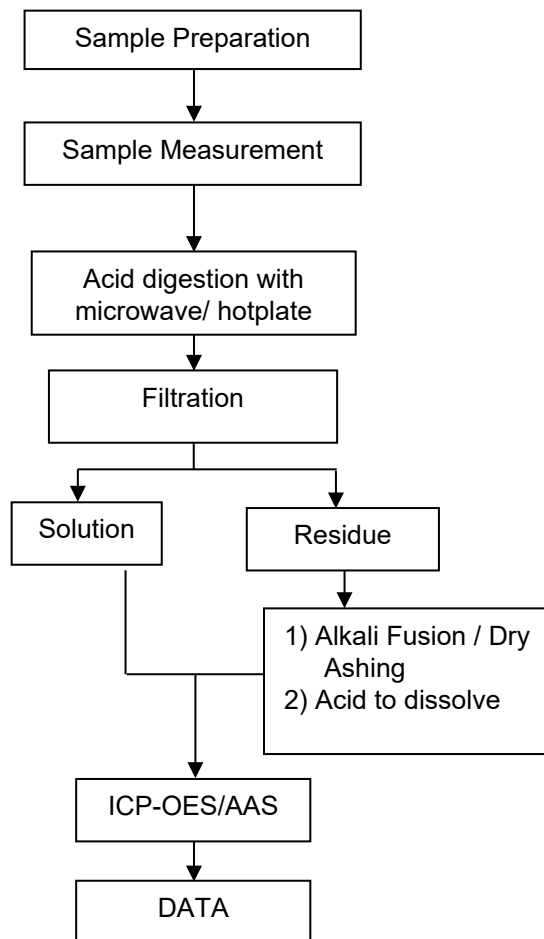
No.1177, Lingyun Road, Hi-Tech Zone, Ningbo, Zhejiang, China 315040 tE&E (86-574)89070249

www.sgsgroup.com.cn

中国·浙江·宁波高新区凌云路1177号 邮编: 315040 tHL (86-574)89070271 tML (86-574)89070242 sgs.china@sgs.com

Elements Testing Flow Chart

These samples were dissolved totally by pre-conditioning method according to below flow chart.



Test Report

ATTACHMENTS

No.: NGBEC25002441809

Date: Apr 25, 2025

Page 5 of 8

Hexavalent Chromium (Cr(VI)) Testing Flow Chart



SGS-CTC Standards Technical Services Co., Ltd.
Ningbo Branch

Unless otherwise agreed in writing, this document is issued by the Company subject to its General Conditions of Service printed overleaf, available on request or accessible at <https://www.sgs.com/en/Terms-and-Conditions>. Attention is drawn to the limitation of liability, indemnification and jurisdiction issues defined therein. Any holder of this document is advised that information contained hereon reflects the Company's findings at the time of its intervention only and within the limits of Client's instructions, if any. The Company's sole responsibility is to its Client and this document does not exonerate parties to a transaction from exercising all their rights and obligations under the transaction documents. This document cannot be reproduced except in full, without prior written approval of the Company. Any unauthorized alteration, forgery or falsification of the content or appearance of this document is unlawful and offenders may be prosecuted to the fullest extent of the law. Unless otherwise stated the results shown in this test report refer only to the sample(s) tested.

Attention: To check the authenticity of testing /inspection report & certificate, please contact us at telephone: (86-755) 8307 1443, or email: CN.Doccheck@sgs.com

No.1177, Lingyun Road, Hi-Tech Zone, Ningbo, Zhejiang, China 315040 tE&E (86-574)89070249

www.sgsgroup.com.cn

中国·浙江·宁波高新区凌云路1177号 邮编: 315040 tHL (86-574)89070271 tML (86-574)89070242 sgs.china@sgs.com

Member of the SGS Group (SGS SA)

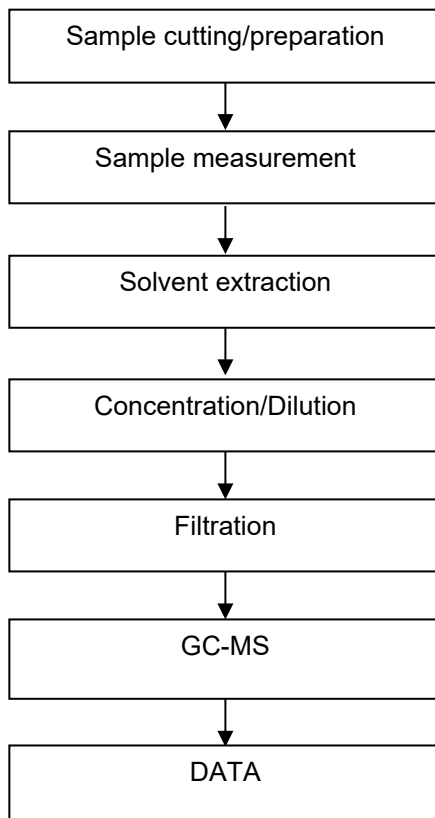
Test Report ATTACHMENTS

No.: NGBEC25002441809

Date: Apr 25, 2025

Page 6 of 8

PBB/PBDE/Phthalates Testing Flow Chart



SGS-CTC Standards Technical Services Co., Ltd.
Ningbo Branch

Unless otherwise agreed in writing, this document is issued by the Company subject to its General Conditions of Service printed overleaf, available on request or accessible at <https://www.sgs.com/en/Terms-and-Conditions>. Attention is drawn to the limitation of liability, indemnification and jurisdiction issues defined therein. Any holder of this document is advised that information contained hereon reflects the Company's findings at the time of its intervention only and within the limits of Client's instructions, if any. The Company's sole responsibility is to its Client and this document does not exonerate parties to a transaction from exercising all their rights and obligations under the transaction documents. This document cannot be reproduced except in full, without prior written approval of the Company. Any unauthorized alteration, forgery or falsification of the content or appearance of this document is unlawful and offenders may be prosecuted to the fullest extent of the law. Unless otherwise stated the results shown in this test report refer only to the sample(s) tested.

Attention: To check the authenticity of testing /inspection report & certificate, please contact us at telephone: (86-755) 8307 1443, or email: CN.Doccheck@sgs.com

No.1177, Lingyun Road, Hi-Tech Zone, Ningbo, Zhejiang, China 315040 tE&E (86-574)89070249

www.sgsgroup.com.cn

中国·浙江·宁波高新区凌云路1177号 邮编: 315040 tHL (86-574)89070271 tML (86-574)89070242 sgs.china@sgs.com

Test Report

No.: NGBEC25002441809

Date: Apr 25, 2025

Page 7 of 8

Attachment:

L-KLS7-TS03xxxxxxxxxxxx;L-KLS7-TS10xxxxxxxxxxxx;
L-KLS7-TS11xxxxxxxxxxxx;L-KLS7-TS12xxxxxxxxxxxx;
L-KLS7-TS16xxxxxxxxxxxx;L-KLS7-TS-1xxxxxxxxxxxx;
L-KLS7-TS20xxxxxxxxxxxx;L-KLS7-TS21xxxxxxxxxxxx;
L-KLS7-TS22xxxxxxxxxxxx;L-KLS7-TS23xxxxxxxxxxxx;
L-KLS7-TS24xxxxxxxxxxxx;L-KLS7-TS25xxxxxxxxxxxx;
L-KLS7-TS27xxxxxxxxxxxx;L-KLS7-TS28xxxxxxxxxxxx;
L-KLS7-TS29xxxxxxxxxxxx;L-KLS7-TS2Bxxxxxxxxxxxx;
L-KLS7-TS2Cxxxxxxxxxxxx;L-KLS7-TS2-xxxxxxxxxxxx;
L-KLS7-TS30xxxxxxxxxxxx;L-KLS7-TS32xxxxxxxxxxxx;
L-KLS7-TS33xxxxxxxxxxxx;L-KLS7-TS34xxxxxxxxxxxx;
L-KLS7-TS35xxxxxxxxxxxx;L-KLS7-TS36xxxxxxxxxxxx;
L-KLS7-TS37xxxxxxxxxxxx;L-KLS7-TS42xxxxxxxxxxxx;
L-KLS7-TS44xxxxxxxxxxxx;L-KLS7-TS45xxxxxxxxxxxx;
L-KLS7-TS46xxxxxxxxxxxx;L-KLS7-TS48xxxxxxxxxxxx;
L-KLS7-TS49xxxxxxxxxxxx;L-KLS7-TS50xxxxxxxxxxxx;
L-KLS7-TS54xxxxxxxxxxxx;L-KLS7-TS55xxxxxxxxxxxx;
L-KLS7-TS60xxxxxxxxxxxx;L-KLS7-TS62xxxxxxxxxxxx;
L-KLS7-TS63xxxxxxxxxxxx;L-KLS7-TS64xxxxxxxxxxxx;
L-KLS7-TS66xxxxxxxxxxxx;L-KLS7-TS72xxxxxxxxxxxx;
L-KLS7-TS74xxxxxxxxxxxx;L-KLS7-TS77xxxxxxxxxxxx;
L-KLS7-TS80xxxxxxxxxxxx;L-KLS7-TS82xxxxxxxxxxxx;
L-KLS7-TS84xxxxxxxxxxxx;L-KLS7-TS85xxxxxxxxxxxx;
L-KLS7-TS88xxxxxxxxxxxx;L-KLS7-TSC1xxxxxxxxxxxx;
L-KLS7-TSC6xxxxxxxxxxxx;L-KLS7-TSD0xxxxxxxxxxxx;
L-KLS7-TSE1xxxxxxxxxxxx;L-KLS7-TSE2xxxxxxxxxxxx;
L-KLS7-TSE3xxxxxxxxxxxx;L-KLS7-TSE4xxxxxxxxxxxx;
L-KLS7-TSE5xxxxxxxxxxxx;L-KLS7-TSE6xxxxxxxxxxxx;
L-KLS7-TSE7xxxxxxxxxxxx;L-KLS7-TSE8xxxxxxxxxxxx;
L-KLS7-TSE9xxxxxxxxxxxx;L-KLS7-TSL1xxxxxxxxxxxx;
L-KLS7-TSP1xxxxxxxxxxxx;L-KLS7-TSS1xxxxxxxxxxxx;
L-KLS7-TSSDxxxxxxxxxxxx;L-KLST-TSC6xxxxxxxxxxxx;



SGS-CSI Standards Technical Services Co., Ltd.
Ningbo Branch

Unless otherwise agreed in writing, this document is issued by the Company subject to its General Conditions of Service printed overleaf, available on request or accessible at <https://www.sgs.com/en/Terms-and-Conditions>. Attention is drawn to the limitation of liability, indemnification and jurisdiction issues defined therein. Any holder of this document is advised that information contained hereon reflects the Company's findings at the time of its intervention only and within the limits of Client's instructions, if any. The Company's sole responsibility is to its Client and this document does not exonerate parties to a transaction from exercising all their rights and obligations under the transaction documents. This document cannot be reproduced except in full, without prior written approval of the Company. Any unauthorized alteration, forgery or falsification of the content or appearance of this document is unlawful and offenders may be prosecuted to the fullest extent of the law. Unless otherwise stated the results shown in this test report refer only to the sample(s) tested.

Attention: To check the authenticity of testing /inspection report & certificate, please contact us at telephone: (86-755) 8307 1443, or email: CN.Doccheck@sgs.com

No.1177, Lingyun Road, Hi-Tech Zone, Ningbo, Zhejiang, China 315040 tE&E (86-574)89070249

www.sgs.com

中国·浙江·宁波高新区凌云路1177号 邮编: 315040 tHL (86-574)89070271 tML (86-574)89070242 sgs.china@sgs.com

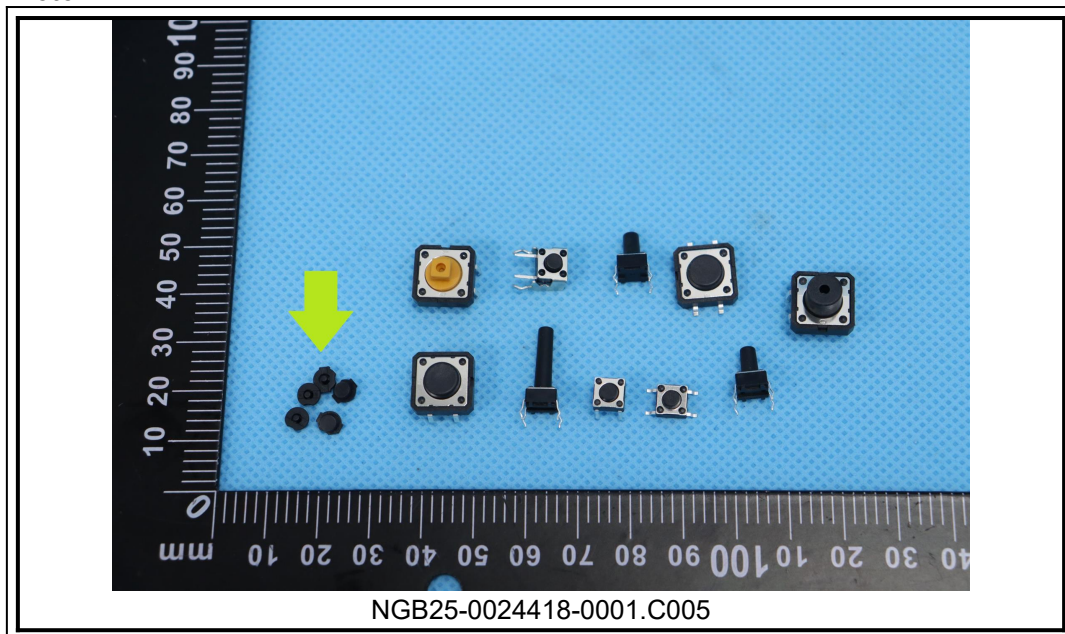
Test Report

No.: NGBEC25002441809

Date: Apr 25, 2025

Page 8 of 8

Sample Photo:



SGS authenticate the photo on original report only

*** End of Report ***



SGS-CSI Standards Technical Services Co., Ltd.
Ningbo Branch

Unless otherwise agreed in writing, this document is issued by the Company subject to its General Conditions of Service printed overleaf, available on request or accessible at <https://www.sgs.com/en/Terms-and-Conditions>. Attention is drawn to the limitation of liability, indemnification and jurisdiction issues defined therein. Any holder of this document is advised that information contained hereon reflects the Company's findings at the time of its intervention only and within the limits of Client's instructions, if any. The Company's sole responsibility is to its Client and this document does not exonerate parties to a transaction from exercising all their rights and obligations under the transaction documents. This document cannot be reproduced except in full, without prior written approval of the Company. Any unauthorized alteration, forgery or falsification of the content or appearance of this document is unlawful and offenders may be prosecuted to the fullest extent of the law. Unless otherwise stated the results shown in this test report refer only to the sample(s) tested.

Attention: To check the authenticity of testing /inspection report & certificate, please contact us at telephone: (86-755) 8307 1443, or email: CN.Doccheck@sgs.com

No.1177, Lingyun Road, Hi-Tech Zone, Ningbo, Zhejiang, China 315040 tE&E (86-574)89070249

www.sgsgroup.com.cn

中国·浙江·宁波高新区凌云路1177号 邮编: 315040 tHL (86-574)89070271 tML (86-574)89070242 sgs.china@sgs.com